



**76<sup>th</sup> Annual One Design Regatta  
August 8-9, 2015  
Sailing Instructions Rules**

**1 Rules**

**1.1** The Regatta will be governed by the Racing Rules of Sailing (RRS), 2013-2016 except as modified herein. If there are any discrepancies between the Notice of Race and the Sailing Instructions, the Sailing Instructions take precedent.

**2. Entries**

**2.1** Completed entry forms shall be in the hands of the Race Committee by 1600 on Friday, August 7, 2015.

**2.2.** Classes of 7 registered boats or more shall each have individual starts. At the discretion of the Organizing Authority, classes with fewer boats registered will be grouped into a fleet(s) and race under the Portsmouth Handicap system (D-PN).

**3. Safety**

**3.1** A boat shall carry all equipment required by her class rules. If not so specified, she shall also carry one USCG-approved PFD for each person on board.

**3.2.** VHF communications should be used for emergencies only.

**4. Notices to Competitors**

**4.1** Notices to competitors will be posted on the Official Regatta Notice Board located in front (landside) of FBYC Main Clubhouse.

**4.2.** Amendments or changes to these Sailing Instructions will be posted by 0900 on Saturday (Aug. 8) and Sunday (Aug. 9).

**5. Signals Made Ashore**

**5.1** Signals made ashore will be displayed on the flagpole on the Fishing Bay dock.

**5.2** The warning signal will be made not less than 45 minutes after "AP" is lowered with one sound. This changes RRS – Race Signals "AP"

**5.3** Signals made ashore shall be for all classes and courses.

**6. Schedule (See Appendix C)**

**6.1** Skippers' Meeting – Saturday, August 08, 2015 at 0900 – Fishing Bay side of Clubhouse

**6.2** Races are scheduled as follows:

<u>Race Day</u>	<u>Date</u>	<u>First Warning Signal</u>
1	Saturday, Aug 8	1100 <i>Subsequent races immediately following preceding race</i>
2	Sunday, Aug 9	1000 <i>Subsequent race(s) immediately following preceding race</i>

**6.3** Code flag "A" displayed with no sound while boats are finishing means "No more racing today".

**6.4** No races will be started after 1600 on Saturday, Aug. 8 or 1400 on Sunday, Aug. 9.

**7. Class Designation**

**7.1** Each class or fleet will be identified by specific class flag or number code flags as indicated below:

<u>Class</u>	<u>Class Flag</u>
Flying Scot	Class Insignia
Front Runner	Class Insignia

<b>Albacore</b>	<b>Class Insignia</b>
<b>Laser – Radial</b>	<b>Class Insignia</b>
<b>Laser- Full</b>	<b>Code Flag “V”</b>
<b>San Juan 21</b>	<b>Code Flag “6”</b>
<b>Windmill</b>	<b>Code Flag “7”</b>
<b>Portsmouth Handicap Fleet (See Sec. 2.2)</b>	<b>Code Flag “9”</b>

**7.2** Class course assignments, racing area and initial order of start will be posted on the Regatta Notice Board according to Section 4.2. and announced at the Skippers’ meeting.

**7.3** All Juniors will start with their respective classes.

## **8. Racing Areas**

**8.1** The racing areas will be in the Fishing Bay area and mouth of the Piankatank River as shown in the chartlet in Appendix A. They are in the vicinity of the circles designated “A”, “B”, “C” and “D” on the chartlet.

## **9. The Course**

**9.1** Sample course diagrams shown in Appendix B show the approximate angles between legs, the order in which marks are to be rounded or passed, and the side on which each mark is to be left.

**9.2** The course for each class will be designated by displaying the appropriate numeral on the Race Committee Signal Boat.

**9.3** The finish line is between the staff of an blue flag on the Race Committee signal boat and the finish pin, or other Race Committee Boat. On course “3” and “5”, the finish line will be to windward of the weather mark.

**9.4** The Start Line for all courses will be to leeward of the Leeward Mark.

**9.5** If the offset mark or gate is not in place, the weather or leeward mark will be rounded as usual.

## **10. Marks**

**10.1** The rounding marks for all classes will be orange inflatable marks.

**10.2** New marks will be yellow inflatable marks.

**10.3** The starting and finishing marks will be inflatable marks or Committee Boat(s).

## **11. The Start**

**11.1** All classes will be started using Rule 26 with the warning signal made 5 minutes before the starting signal.

**11.2** The starting line will be between a staff displaying an orange flag on the Race Committee Signal Boat at the starboard end of the line and the course side of the orange inflatable, or a staff displaying an orange flag on another Race Committee Boat, at the port-end.

**11.3** An Attention Sound consisting of multiple short sounds will be made approximately one (1) minute before the first Warning Signal for each day. This is not a timed sound.

**11.4** A boat starting later than 4 minutes after her starting signal will be scored “Did Not Start”. This changes rule A4.

## **12. Recalls**

**12.1** Race Committee will attempt to hail OCS boats by sail number on Individual Recalls. Failure of the race committee to make this hail, failure of a boat to hear the hail, her position in the sequence of notifications or promptness of notification will not be valid grounds for redress. This modifies RRS 29.1

## **13. Change of the Course After the Start**

**13.1** Any mark to be rounded after rounding the New Change Mark may be relocated to maintain the original course configuration.

**13.2** When in a subsequent change of course, a New Change Mark is replaced, it will be replaced with an original orange mark.

#### **14. Time Limit**

**14.1** The time limit for the first boat in each class to finish will be 90 minutes.

**14.2** Boats failing to finish within 30 minutes after the first boat in the class finishes will be scored "Time Limit Expired". TLE will be scored the number of boats finished plus 2. This changes rules 35, A4.2 and A5.

#### **15. Equipment**

**15.1** If a non-registered sail number is used, the competitor must notify in writing its use to the Race Committee prior to 0900 on the day of racing and it must be approved and signed by the PRO. Sail Change Notification forms are available on the Regatta Notice Board.

#### **16. Protests**

**16.1** Both Section B (Post-Race Penalties) and section C (Expedited Hearings of Appendix T (Alternate Procedures for Dispute Resolution) are in effect for this regatta.

**16.2** Protests shall be in writing and delivered to the Protest Desk, located in the screened in porch of the Main club house, within the Protest Time Limit. The Protest Time Limit will begin when the Race Committee Signal Boat for each respective course docks and ends one hour later. The Protest Time Limit for each course will be posted on the Regatta Notice Board.

**16.3** A boat may not protest a boat for an alleged breach of RRS 75.2 (Eligibility) with respect to ISAF Reg.19.

**16.4** A notice of protests filed and approximate hearing times will be posted on the Regatta Notice Board within 20 minutes after the expiration of Protest Time Limit. This posting shall constitute the notice required for Race Committee or Protest Committee protests required under RRS 61.1 (b).

#### **17. Retiring**

**17.1** A boat retiring shall, as soon as possible, shall hail the Race Committee on the respective course and receive acknowledgement. VHF notification and acknowledgement may be used.

#### **18 Scoring**

**18.1** The Low-Point Scoring System, RRS A4, will apply except each skipper's total score will be the the sum of his/her scores for all races (No throw-outs). This changes RRS A2.

**18.2** Post-race penalties will be available as per Appendix T, Section B Post-Race Penalties.

a. The penalty under T2.2 (a) will be 20% (Penalty accepted prior to end of Protest Time Limit).

b. The penalty under T2.2 (b) will be 30% (Penalty accepted after end of Protest Time Limit).

**18.3** Alternative Penalty Acknowledgement Forms will be available at the Protest Deck (See 17.2)

**18.4** Classes racing under the Portsmouth Handicap will be scored as a Fleet and not their respective class.

**18.5** One completed race constitutes a regatta.

#### **19. Awards**

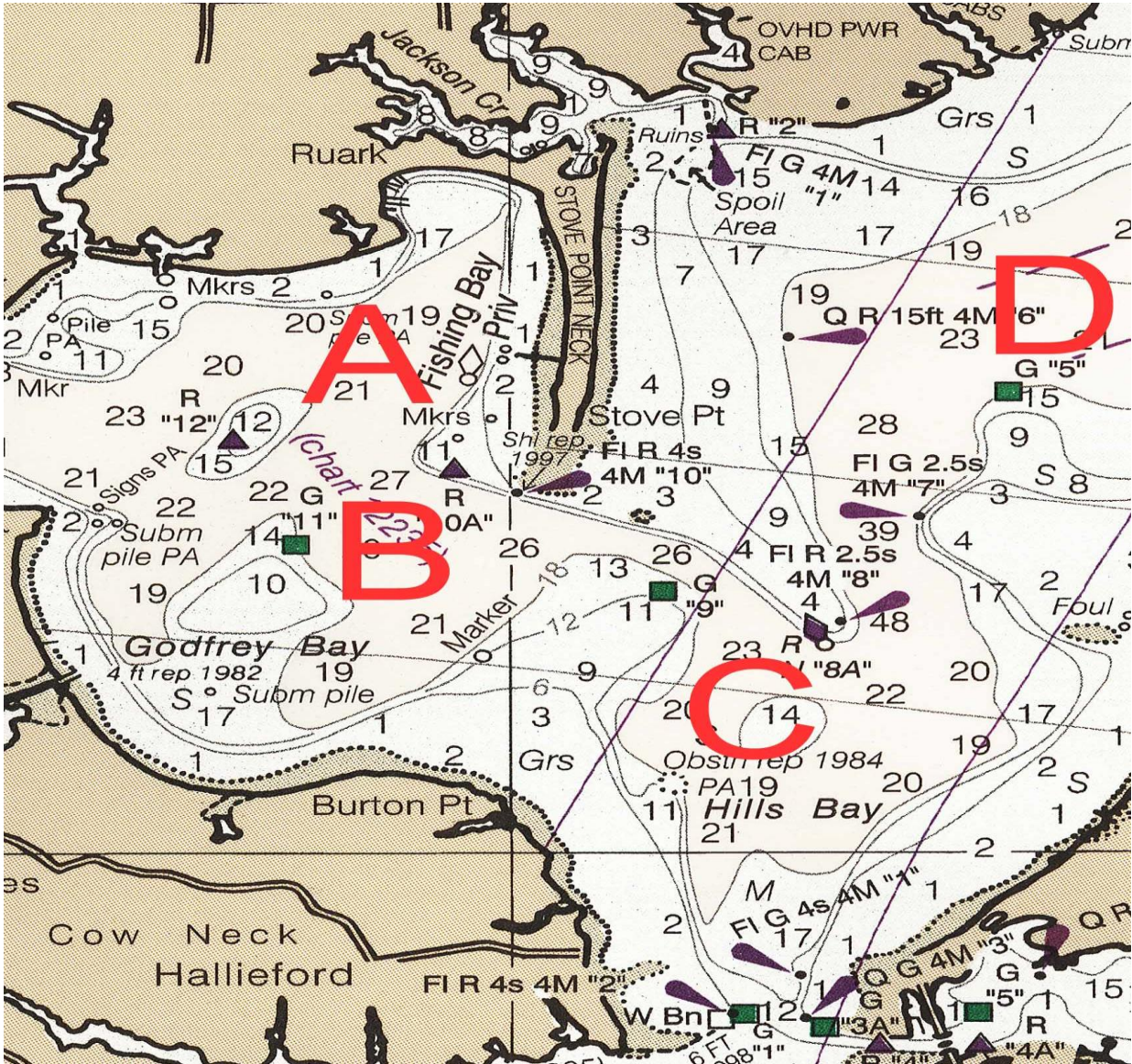
**19.1** Awards will be presented as follows:

Class- 1<sup>st</sup>, 2<sup>nd</sup>, and 3<sup>rd</sup> for 7 boats, 4<sup>th</sup> – 11 boats, 5<sup>th</sup> for 15 boats or more

Portsmouth Fleets – 1<sup>st</sup>, 2<sup>nd</sup>, 3<sup>rd</sup>.

**20. Disclaimer of Liability** – Competitors participate in the regatta entirely at their own risk. See Rule 4, Decision to Race. The organizing authority will not accept any liability for material damage or personal injury or death sustained in conjunction with or prior to, during or after the regatta.

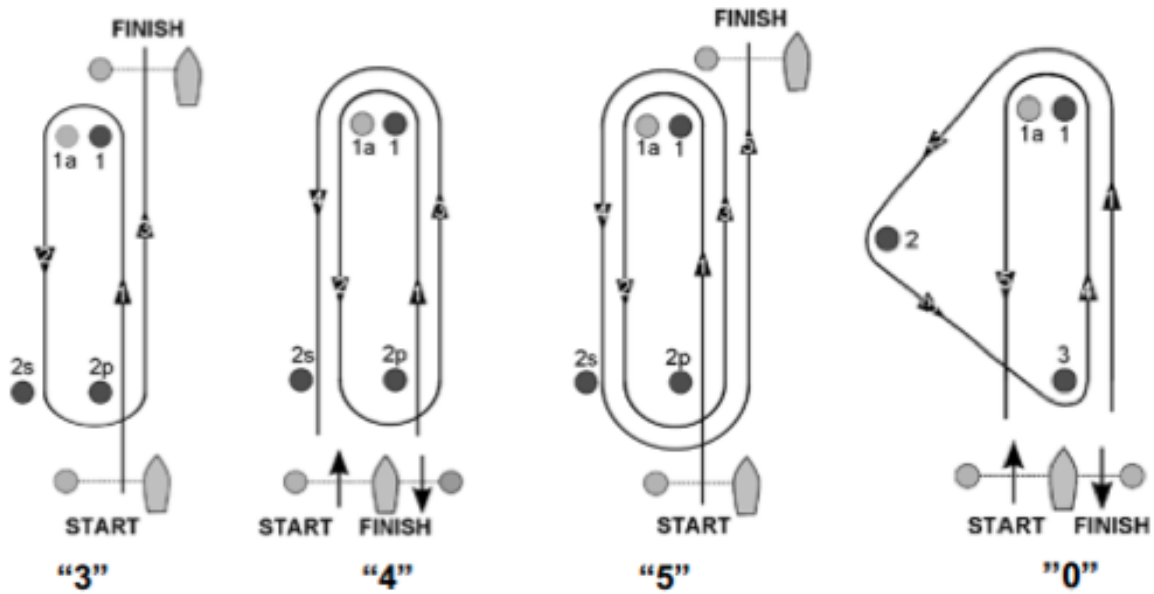
## Appendix A: Racing Area Chartlet



The above i

*Illustrations represent sample courses only. Total legs for courses W, WL, H, and E (denoted by numerals) may be added or subtracted but the basic positions of start/finish lines remain the same.[ Sec. 9.2]*

## Appendix B: Courses



Course 3: Start, 1, 1a, 2s/2p, Finish Upwind

Course 4: Start, 1, 1a, 2s/2p, 1, 1a, Finish Downwind

Course 5: Start, 1, 1a, 2s/2p, 1, 1a, 2s/2p, Finish Upwind

Course 0: Start, 1,2,3,1,1a, Finish Downwind

## **Appendix C**

### **Schedule of Events**

#### **Friday, August 07, 2015**

Late Registration	1400 – 1600
Early check in	1700 – 2000

#### **Saturday, August 8, 2015**

Continental Breakfast	0800
Check-In	0800 - 0930
Skippers Meeting	0900
First Warning Signal	1100
Followed by subsequent races	
Post Race Bar	1700
Buffet Dinner	1800
Live Music and Dancing	1800-2200

#### **Sunday, August 9, 2015**

Continental Breakfast	0800
First Warning Signal	1000
Followed by subsequent races	
No races started after	1400
Followed by refreshments and awards	